



BS PLUS

Motorcycle Bluetooth®
Communication System

© 1998–2020 Sena Technologies, Inc. All rights reserved.

Sena Technologies, Inc. reserves the right to make any changes and improvements to its product without providing prior notice.

Sena™ is a trademark of Sena Technologies, Inc. or its subsidiaries in the USA and other countries. SF1™, SF2™, SF4™, SFR™, SRL™, Momentum™, Momentum INC™, Momentum Lite™, Momentum Pro™, Momentum INC Pro™, Momentum EVO™, Cavalry™, Latitude SR™, Latitude SX™, Latitude S1™, 30K™, 50S™, 50R™, 5S™, 20S EVO™, 20S™, 10S™, 10C™, 10C PRO™, 10C EVO™, 10U™, 10Upad™, 10R™, 3S™, 3S PLUS™, SMH5™, SMH5-FM™, SMH5 MultiCom™, SMH10™, SMH10R™, SPH10™, SPH10H-FM™, Savage™, Prism Tube WiFi™, Prism™, Bluetooth Audio Pack for GoPro®, R1™, R1 EVO™, R1 EVO CS™, M1™, M1 EVO™, RC1™, RC3™, RC4™, Handlebar Remote™, Wristband Remote™, PowerPro Mount™, Powerbank™, FreeWire™, WiFi Docking Station™, WiFi Sync Cable™, WiFi Adapter™, +mesh™, +Mesh Universal™, MeshPort Blue™, MeshPort Red™, Econo™, OUTRUSH™, OUTSTAR™, EcoCom™, Parani M10™, Snowtalk™, Snowtalk2™, SR10™, SR10i™, SM10™, X1™, X1 Pro™, X1S™, Expand™, Expand Boom™, Bluetooth Mic & Intercom™, Tufftalk™, Tufftalk Lite™, Tufftalk M™ are trademarks of Sena Technologies, Inc. or its subsidiaries. These trademarks may not be used without the express permission of Sena.

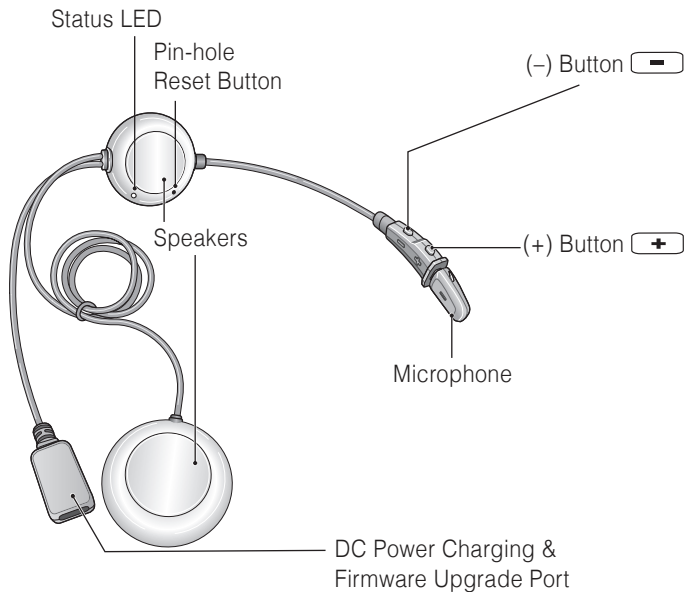
GoPro® is a registered trademark of Woodman Labs of San Mateo, California. Sena Technologies, Inc. (“Sena”) is not affiliated with Woodman Labs, Inc. The Sena Bluetooth Pack for GoPro® is an aftermarket accessory specially designed and manufactured by Sena Technologies, Inc. for the GoPro® Hero3 and Hero4 allowing for Bluetooth capabilities.

The Bluetooth® word mark and logos are owned by the Bluetooth SIG, Inc. and any use of such marks by Sena is under license. iPhone® and iPod® touch are registered trademarks of Apple Inc.

CONTENTS

1	PACKAGE CONTENTS	4
2	INSTALLING THE HEADSET ON YOUR HELMET	6
2.1	Boom Microphone Type	6
2.2	Universal Microphone Type	7
3	GETTING STARTED	9
3.1	Button Operation	9
3.2	Sena Softwares	10
3.2.1	Sena Utility App	10
3.2.2	Sena Device Manager	10
3.3	Powering On and Off	10
3.4	Charging	10
3.5	Checking the Battery Level	11
3.6	Volume Adjustment	11
4	PAIRING THE HEADSET WITH OTHER BLUETOOTH DEVICES	11
4.1	Phone Pairing	11
4.1.1	Initially Pairing the headset	11
4.1.2	Pairing When the Headset Is Turned Off	12
4.1.3	Pairing When the Headset Is Turned On	12
4.2	Second Mobile Phone Pairing - Second Mobile Phone and SR10	12
4.3	GPS Pairing	12
5	MOBILE PHONE USAGE	13
5.1	Mobile Phone Call Making and Answering	13
6	STEREO MUSIC	14
6.1	Bluetooth Stereo Music	14
7	BLUETOOTH INTERCOM	14
7.1	Intercom Pairing	14
7.1.1	Pairing with Other Headsets for Intercom Conversation	14
7.2	Two-Way Intercom	15
7.2.1	Starting and Ending Two-Way Intercom	15
8	UNIVERSAL INTERCOM	15
9	FUNCTION PRIORITY	16
10	CONFIGURATION SETTING	16
10.1	Headset Configuration Setting	16
10.1.1	Delete All Pairings	17
10.1.2	Factory Reset	17
10.2	Software Configuration Setting	17
10.2.1	Unit Language	17
10.2.2	VOX Phone (Default: Enable)	17
10.2.3	HD Intercom (Default: Enable)	17
10.2.4	HD Voice (Default: Enable)	17
10.2.5	Voice Prompts (Default: Enable)	18
10.2.6	Advanced Noise Control™ (Default: Enable)	18
11	FIRMWARE UPGRADE	18
12	TROUBLESHOOTING	19
12.1	Fault Reset	19
12.2	Factory Reset	19

1 PACKAGE CONTENTS



Boom Microphone Type

- **Microphone Sponges**

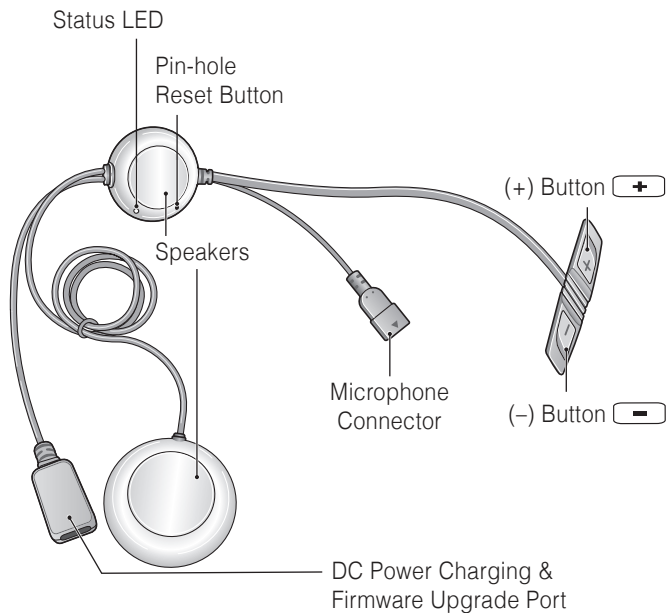


- **Hook and Loop Fasteners for Speakers**



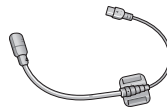
- **USB Power & Data Cable (USB-C)**





Universal Microphone Type

- **Wired Boom Microphone**



- **Hook and Loop Fasteners for Wired Boom Microphone**



- **Wired Boom Microphone Sponges**



- **Wired Boom Microphone Holder**



- **Hook and Loop Fastener for Wired Boom Microphone Holder**



- **Wired Microphone**



- **Hook and Loop Fasteners for Wired Microphone**



- **Hook and Loop Fasteners for Speakers**



- **Double Sided Adhesive Tape**



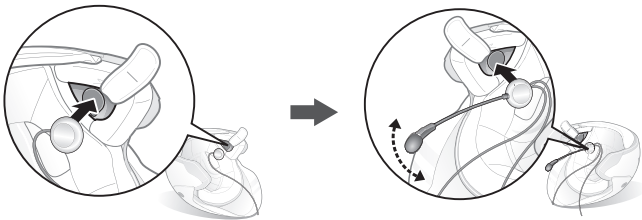
- **USB Power & Data Cable (USB-C)**



2 INSTALLING THE HEADSET ON YOUR HELMET

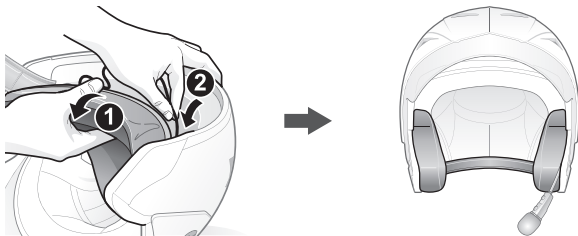
2.1 Boom Microphone Type

1. Peel off the hook fasteners for the speakers and attach them on the back sides of the speakers.
2. Attach the loop fasteners for the speakers in the deep ear pockets of your helmet. Then place the speakers in the helmet along with the hook and loop fasteners, centered to your ear.



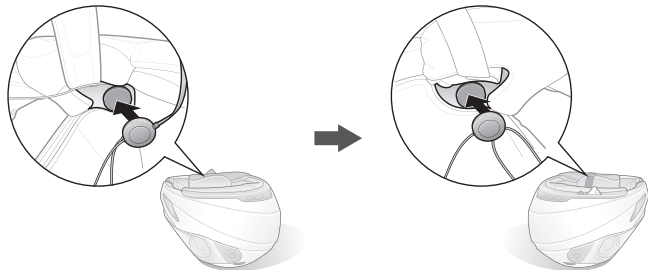
Note: Locate the boom microphone as closely as possible to your mouth when wearing the helmet.

3. Hide the wire under the helmet padding after the installation.

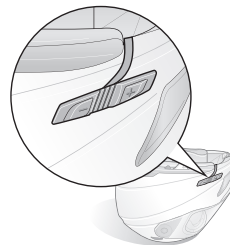


2.2 Universal Microphone Type

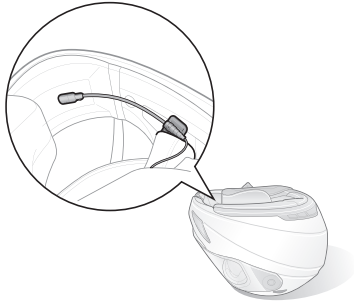
1. Peel off the hook fasteners for the speakers and attach them on the back sides of the speakers.
2. Attach the loop fasteners for the speakers in the deep ear pockets of your helmet. Then place the speakers in the helmet along with the hook and loop fasteners, centered to your ear.



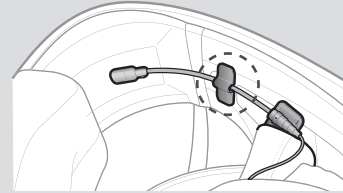
3. Locate a suitable surface on the left side of your helmet to attach the unit, clean the location with a moistened towel, and allow to dry thoroughly. Make sure that the control unit sticks on the helmet firmly. Maximum adhesion occurs after 24 hours.



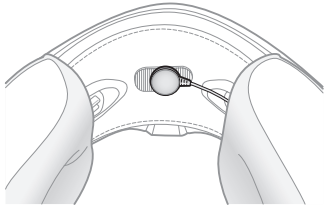
- 4-1. Attach the hook and loop fastener for the wired boom microphone between the internal helmet cheek pad and the internal wall of the helmet shell. Place the wired boom microphone on the hook and loop fastener and attach the microphone connector to the 2 pin connector of the main unit cable. The microphone should be mounted so it is positioned close to your mouth when you are wearing the helmet.



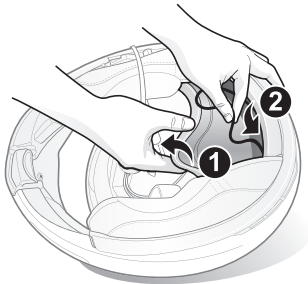
Note: You can use the wired boom microphone holder after attaching the hook and loop fastener for wired boom microphone holder on it to ensure secure installation.



- 4-2. Attach the hook and loop fastener for the wired microphone to the inside of the chin guard for full face helmets. Place the wired microphone on the hook and loop fastener.

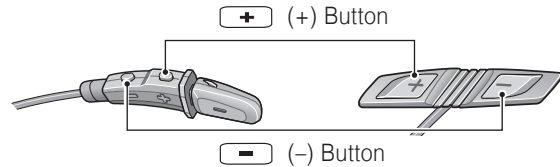


5. Hide the wire under the helmet padding after the installation.



3 GETTING STARTED

3.1 Button Operation



Boom Microphone Type

Universal Microphone Type

3.2 Sena Softwares

3.2.1 Sena Utility App

By simply pairing your phone with your headset, you can use the **Sena Utility App** for quicker, easier setup and management.

- App Features
 - Music, Device settings, Quick Start Guide, and User's Guide.
- Download
 - Android: Google Play Store > **Sena Utility**
 - iOS: App Store > **Sena Utility**

3.2.2 Sena Device Manager

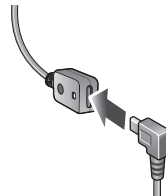
The **Sena Device Manager** allows you to upgrade firmware and configure settings directly from your PC. Download the **Sena Device Manager** from www.sena.com.

3.3 Powering On and Off

To power on the headset, press and hold the **(+) Button** and the **(-) Button** for **1 second**. To power off the headset, tap the **(+) Button** and the **(-) Button**.

3.4 Charging

The headset will be fully charged in about 3 hours. The charging time may vary depending on the charging method.



Note:

- Please make sure to take off your headset while charging. The headset automatically turns off during charging.
- Any 3rd party USB charger can be used with Sena products if the charger is approved by either the FCC, CE, IC or other locally approved agencies that Sena accepts.
- The headset is compatible with 5 V/1 A input USB-charged devices only.

3.5 Checking the Battery Level

When the headset is powering on, the red LED flashes rapidly indicating the battery level.

- 4 flashes = High, 70 ~ 100%
- 3 flashes = Medium, 30 ~ 70%
- 2 flashes = Low, 0 ~ 30%

3.6 Volume Adjustment

You can raise or lower the volume by tapping the **(+) Button** or the **(-) Button**. Volume is set and maintained independently at different levels for each audio source, even when the headset is rebooted.

4 PAIRING THE HEADSET WITH OTHER BLUETOOTH DEVICES

When using the headset with other Bluetooth devices for the first time, they will need to be “paired.” This enables them to recognize and communicate with one another whenever they are within range. The headset can pair with multiple Bluetooth devices such as a mobile phone, GPS, MP3 player or Sena SR10 Two-Way Radio Adapter via **Mobile Phone Pairing, Second Mobile Phone Pairing and GPS Pairing**.

4.1 Phone Pairing

There are three ways to pair the phone.

4.1.1 Initially Pairing the headset

The headset will automatically enter the phone pairing mode when you initially turn on the headset or in the following situations:

- Rebooting after executing **Factory Reset**; or
 - Rebooting after executing **Delete All Pairings**.
1. Press and hold the **(+) Button** and **(-) Button** for **1 second**.
 2. You will hear a voice prompt, “**Phone pairing**”.

3. Search for Bluetooth devices on your mobile phone. Select **Sena 3S PLUS** in the list of devices detected.
4. If your mobile phone asks for a PIN, enter 0000.

Note:

- The phone pairing mode lasts for **3 minutes**.
- To cancel pairing, tap the **(+) Button** or **(-) Button**.

4.1.2 Pairing When the Headset Is Turned Off

1. While the **headset** is turned off, press and hold the **(+) Button** and **(-) Button** for **5 seconds**.
2. You will hear a voice prompt, **“Phone pairing”**.
3. Search for Bluetooth devices on your mobile phone. Select **Sena 3S PLUS** in the list of devices detected.
4. If your mobile phone asks for a PIN, enter 0000.

4.1.3 Pairing When the Headset Is Turned On

1. While the **headset** is turned on, press and hold the **(+) Button** for **5 seconds**.
2. You will hear a voice prompt, **“Phone pairing”**.
3. Search for Bluetooth devices on your mobile phone. Select **Sena 3S PLUS** in the list of devices detected.
4. If your mobile phone asks for a PIN, enter 0000.

4.2 Second Mobile Phone Pairing - Second Mobile Phone and SR10

1. To enter the configuration menu, press and hold the **(+) Button** for **10 seconds** until you hear a voice prompt, **“Configuration menu”**.
2. Tap the **(+) Button** until you hear a voice prompt, **“Second mobile phone pairing”**.
3. Search for Bluetooth devices on your mobile phone. Select **Sena 3S PLUS** in the list of devices detected.
4. If your mobile phone asks for a PIN, enter 0000.

4.3 GPS Pairing

1. To enter the configuration menu, press and hold the **(+) Button** for **10 seconds** until you hear a voice prompt, **“Configuration menu”**.
2. Tap the **(+) Button** until you hear a voice prompt, **“GPS pairing”**.
3. Search for Bluetooth devices on the GPS navigation screen. Select **Sena 3S PLUS** in the list of devices detected.
4. If your mobile phone asks for a PIN, enter 0000.

Note: If you have a mobile phone and a GPS connected to your headset, you may not be able to listen to the GPS voice instruction during the phone call.

5 MOBILE PHONE USAGE

5.1 Mobile Phone Call Making and Answering

1. When you have an incoming call, simply tap the **(+) Button** to answer the call.
 2. You can also answer the incoming call by loudly speaking any word of your choice if **VOX Phone** is enabled, unless you are connected to intercom.
 3. To end a call, press the **(+) Button** for **2 seconds**, or wait for the called person to end the call.
 4. To reject a call, press the **(-) Button** for **2 seconds** while the phone is ringing.
5. There are several ways to make a phone call:
 - Enter numbers on your mobile phone's keypad and make a call. Then the call is automatically transferred to the headset.
 - In stand-by mode, press the **(+) Button** for **3 seconds**, to activate the voice dialing of your mobile phone. For this, the voice dialing function must be available on the mobile phone. Refer to your mobile phone manual for further instruction.
 - To redial the last number, press and hold the **(-) Button** for **3 seconds** in stand-by mode until you hear a high tone single beep. You will hear a voice prompt, **"Last number redial"**.

6 STEREO MUSIC

6.1 Bluetooth Stereo Music

1. To play or pause music, press and hold the **(+) Button** for **1 second**.
2. To track forward or track back, press and hold the **(+) Button** or the **(-) Button** for **2 seconds**.

7 BLUETOOTH INTERCOM

7.1 Intercom Pairing

7.1.1 Pairing with Other Headsets for Intercom Conversation

The headset can be paired with another headset for Bluetooth intercom conversation.

1. Press and hold the **(-) Button** of the **headset A and B** for **5 seconds** until red LEDs of the both units start to flash rapidly.
2. Simply tap the **(-) Button** of any one of the two **headsets A and B**, and wait until the LEDs of both headsets turn to blue and intercom connection is automatically established.



7.2 Two-Way Intercom

7.2.1 Starting and Ending Two-Way Intercom

To start an intercom conversation, press and hold the **(-) Button** for **1 second**.

To terminate an intercom conversation, press and hold the **(-) Button** for **1 second** again.

8 UNIVERSAL INTERCOM

Universal Intercom allows you to have Two-way intercom conversations with users of non-Sena Bluetooth headsets. Non-Sena Bluetooth headset can be connected to the Sena Bluetooth headset if they support the Bluetooth Hands-Free Profile (HFP). You can pair the headset with only one non-Sena headset at a time. The intercom distance depends on the performance of the Bluetooth headset to which it's connected.

When a non-Sena Bluetooth headset is paired with the headset, if another Bluetooth device is paired via **Second Mobile Phone Pairing**, it will be disconnected.

1. Press and hold the **(+) Button** for **10 seconds** to enter the configuration menu.
2. Tap the **(+) Button** until you hear a voice prompt, **“Universal intercom pairing”**.
3. Tap the **(-) Button** to enter into Universal Intercom Pairing mode.
4. Put the non-Sena Bluetooth headset in Pairing Mode. The headset will automatically pair with a non-Sena Bluetooth headset.

9 FUNCTION PRIORITY

The headset operates in the following order of priority:

- (Highest)** Mobile phone
Intercom
- (Lowest)** Bluetooth stereo music

A lower priority function is always interrupted by a higher priority function.

10 CONFIGURATION SETTING

10.1 Headset Configuration Setting

- To enter configuration menu, press and hold the **(+) Button** for **10 seconds** until you hear a voice prompt, “**Configuration menu**”.
- Tap the **(+) Button** to navigate between the menus. You will hear voice prompts for each menu item.
- You can execute the command by tapping the **(-) Button**.

Configuration Menu	Tap (-) Button
Second Mobile Phone Pairing	None
GPS Pairing	None
Delete All Pairings	Execute
Universal Intercom Pairing	Execute
Factory Reset	Execute
Exit Configuration	Execute

10.1.1 Delete All Pairings

You can delete all Bluetooth pairing information of the headset.

10.1.2 Factory Reset

You can restore factory default settings on the headset.

10.2 Software Configuration Setting

You can change the settings of the headset through the **Sena Device Manager** or the **Sena Utility App**.

10.2.1 Unit Language

You can select the device language. The selected language is maintained even when the headset is rebooted.

10.2.2 VOX Phone (Default: Enable)

If this feature is enabled, you can answer incoming calls by voice. When you hear a ringtone for an incoming call, you can answer the phone by saying a word such as **“Hello”** loudly or by blowing air into the microphone. **VOX phone** is temporarily disabled if you are connected to intercom. If this feature is disabled, you have to tap the **(+) Button** to answer an incoming call.

10.2.3 HD Intercom (Default: Enable)

HD Intercom enhances the two-way intercom audio from normal quality to HD quality. If this feature is disabled, the two-way intercom audio will change to normal quality.

*Note: The intercom distance of **HD Intercom** is relatively shorter than that of normal intercom.*

10.2.4 HD Voice (Default: Enable)

HD Voice allows you to communicate in high-definition during phone calls. This feature increases the quality so that the audio will be crisp and clear during phone call conversations. If this feature is enabled, incoming phone calls will interrupt intercom conversations and audio from the SR10 will not be heard during intercom conversations.

*Note: Refer to the manufacturer of your Bluetooth device that will be connected to the headset to see if it supports **HD Voice**.*

10.2.5 Voice Prompts (Default: Enable)

You can disable **voice prompts** by software configuration settings, but the following voice prompts are always on.

- Headset configuration settings menu

10.2.6 Advanced Noise Control™ (Default: Enable)

When **Advanced Noise Control** is enabled, the background noise is reduced during an intercom conversation. When it is disabled, the background noise is mixed with your voice during intercom.

11 FIRMWARE UPGRADE

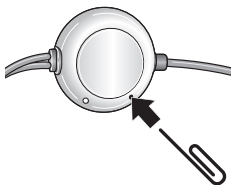
The headset supports firmware upgrades. You can update firmware using the **Sena Device Manager**. Please visit Sena Bluetooth website at www.sena.com to check the latest software downloads.

12 TROUBLESHOOTING

12.1 Fault Reset

When the headset is not working properly, you can easily reset the unit.

1. Locate the **Pin-hole Reset Button** on the left speaker unit.
 2. Gently insert a paperclip into the hole and press the **Pin-hole Reset Button** with light pressure.
- The headset will automatically be turned off and a fault reset will occur.



*Note: **Fault Reset** will not restore the headset to the factory default settings.*

12.2 Factory Reset

If you want to restore the headset to factory default settings, use the **Factory Reset** in the configuration menu. The headset automatically restores the default settings and turns off.

